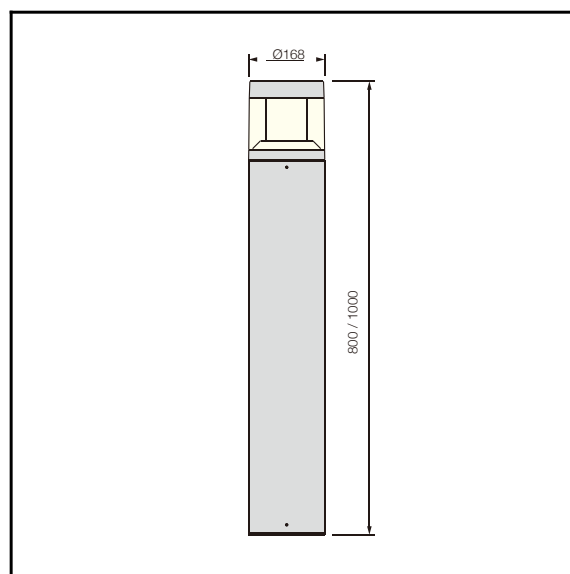




The photograph may not match the reference exactly. Please read the product description to identify the finish.



C-14FA

TECHNICAL CHARACTERISTICS



Product Model:	C-14FAH100
IP Protection degrees:	IP65
IK Protection degrees:	IK08
Light source:	144 x SMD 2835
Total power consumption:	25W
Luminous Flux:	1250-1375Lm
Luminous efficiency:	50-55Lm/w
Color temperature:	4000K as standard. Optinal 2700K,3000K & 5700K. Amber LED available
Voltage/Frequency:	100-240V/50-60Hz
Warranty(Years):	3
Units per box:	1
Net Weight(Kg)	5.8

MATERIALS / FINISHES

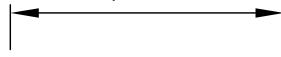
Structure material: High purity aluminium	aiffuser material: PC
Structure finish: Black	Diffuser finish: Transparent

GEAR

Multi-voltage electronic gear included (110-240 V / 50-60 Hz)

Lm^(N): Nominal flow of light in actual working conditions. Its actual flow will depend on the environmental conditions and the efficiency of the optics and/or diffuser.

$\phi 168$

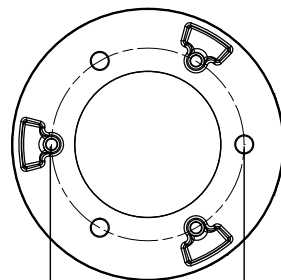
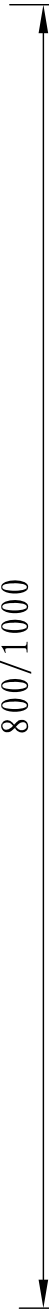


Transparent PC

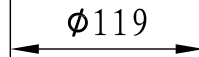


High purity aluminum

800/1000



$\phi 119$



Installation template

C-14FA