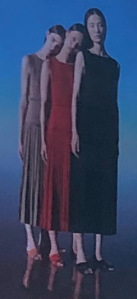




ICICLE



自然万智之一
MADE IN EARTH

3F ICICLE之天

ICICLE



自然万智之一
MADE IN EARTH

3F ICICLE之天

IC

CAI

三
光

ICICLE

ICICLE



M-215A
6W



M-215B
6W



M-215C
4W

简述 Description



- 304不锈钢面板和预埋件底座，氧化纯铝灯体结构
- 超厚10mm钢化丝印玻璃，静态可承载超过2000kg
- 特殊设计的光学组件，无任何眩光，具有很好的光学视觉效果
- 插入式安装设计模式，无任何外露灯具安装部件
- 灯具表面耐油、防水设计，使用安全可靠
- 灯具表面最高温度不超过50℃，安全可靠
- 所有外部螺钉均为304不锈钢材质
- 灯具符合EN60598-1技术标准要求

功率: 6W / 6W / 4W
光效: 50-60 Lm/W (Ra80)
色温: 2700K / 3000K / 4000K
输入电压: DC 24V
功能选项: Switch

- Stainless steel type 304 body and installation housing, Pure aluminium construction fixture body.
- Clear tempered glass 10 mm, the static load of the luminaire can resistance 2000kg.
- Special good design for high performance optics, optics, and it has high performance optics and anti glare system.
- Snap in installation with no exposed hardware, and the luminaire can continuous run of standard lengths.
- Supplied with oil and water resistant, it is safety and reliable for using.
- The maximum surface temperature of all contact temperature <50°C for safety and reliable.
- All external screw are made of 304 stainless steel.
- The luminaire technical characteristics conform to EN 60598-1 standards.

Power: 6W / 6W / 4W
Nominal efficacy: 50-60 Lm/W (Ra80)
CCT: 2700K / 3000K / 4000K
Input voltage: DC 24V
Options: Switch

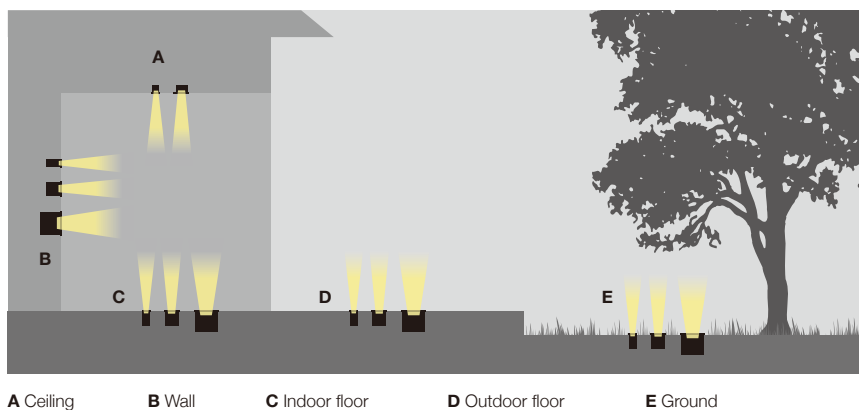
- **应用场合:** 广场、建筑物、雕塑、标志物、广告牌等景观照明场所
- **Applications:** For landscape lighting places such as square, buildings, sculptures, signs and billboards.

M-215 Series

安装应用 Installation

灯具可适用于地板、墙面、地面和吸顶多种安装场地应用

Installation in floor / wall / ground / ceiling,
Multiple applications for formal continuity.



材质 Materials

高品质的材质选择，确保高品质的产品质量，高强度钢化玻璃面板，确保IK10，PP预埋件底座，特殊设计的光学反光杯，使得灯具具有高性能的光学参数

We select materials of highest possible quality, to ensure high-degree product quality. High sturdy tempered glass with protection up to IK10, PP plastic installation housing, special design optics to keep the fixture higher performance levels.



安全性能 Safety performance

装在地面或地板的嵌入式灯具符合标准防滑和抗压要求，触碰灯具表面温度控制在安全标准之内

Ground and floor level recessed luminaires, have different degrees of resistance to torsion and shear, up to 2000 Kg in accordance with EN 60598-2-13.



Temperature < 40° C



Diffuser optics versions complete with non-slip glass



Resistance to static load (2000 Kg)

光学选项 Optical options

灯具拥有多款光学选项，为视觉舒适性提供最有效的照明解决方案，避免不必要的眩光并减少光污染，并满足不同场所需求应用

The design has a variety of optical accessories to option, providing the most effective lighting solution for visual comfort, avoiding unnecessary glare and reducing light pollution, it can meet the needs of different applications.



Wall washer
M-215A



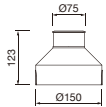
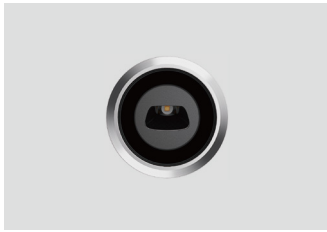
Beam lens
M-215B



Diffuser optic
M-215C

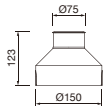


技术参数 Technology data



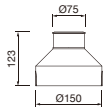
M-215A

Code	Power	LED Qty	Control Options	Input Voltage	Optics	Packing Size	Weight
LED chips - 3535							
M-215ALEd6-1	6W	1	Switch	DC 24V	30°x45° Tilt 15°	320*320*275/8pcs	7.2



M-215B

Code	Power	LED Qty	Control Options	Input Voltage	Optics	Packing Size	Weight
LED chips - 3535							
M-215BLEd6-1	6W	1	Switch	DC 24V	15°/30°/50°	320*320*275/8pcs	7.2



M-215C

Code	Power	LED Qty	Control Options	Input Voltage	Optics	Packing Size	Weight
LED chips - 3535							
M-215CLEd4-1	4W	1	Switch	DC 24V	120°	320*320*275/8pcs	7.2

安装示意图 Installation

