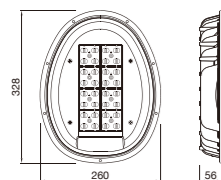


MD-02N

材料: 铝压铸灯体, PP镀铬塑料反射罩
表面处理: 防紫外线静电喷涂

Material: Die-casting aluminum body,
PP reflector by chrome.
Finishing: Surface anti-ageing
electrostatic spray processing, super
resistance to corrosion.

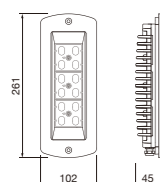


Code	Power	LED Qty	Optics	Packing Size	Weight	Pcs/20"	Pcs/40"
LED chips - 3535/5050							
MD-02NLED40-16	40W	16	T2A/T3A/T4A/T3M/T4	570*360*210/4pcs	10.6/4pcs	2560	5200
MD-02NLED60-24	60W	24	T2D/T3D/T4D/T3N	570*360*210/4pcs	10.6/4pcs	2560	5200
MD-02NLED75-32	75W	32	T2A/T3A/T4A/T3M/T4	570*360*210/4pcs	10.6/4pcs	2560	5200
MD-02NLED100-48	100W	48	T2D/T3D/T4D/T3N	570*360*210/4pcs	10.6/4pcs	2560	5200
LED chips - 3030							
MD-02NLED60-56	60W	56	T1B/T2B/T3B/T4B	570*360*210/4pcs	10.6/4pcs	2560	5200
MD-02NLED100-112	100W	112	T1B/T2B/T3B/T4B	570*360*210/4pcs	10.6/4pcs	2560	5200

MD-04

材料: 铝压铸灯体, PP镀铬塑料反射罩
表面处理: 防紫外线静电喷涂

Material: Die-casting aluminum body,
PP reflector by chrome.
Finishing: Surface anti-ageing
electrostatic spray processing, super
resistance to corrosion.

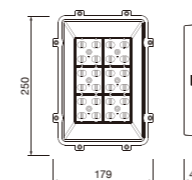
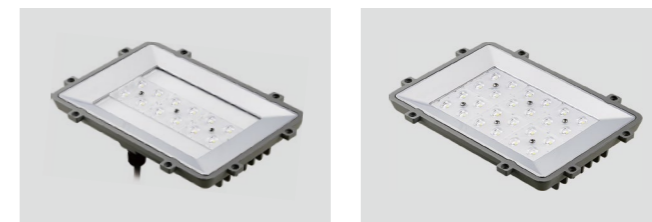


Code	Power	LED Qty	Optics	Packing Size	Weight	Pcs/20"	Pcs/40"
LED chips - 3535/5050							
MD-04LED30-12	30W	12	T2A/T3A/T4A/T3M/T4	290*255*235/6pcs	7.5/6pcs	9180	19224
MD-04LED40-18	40W	18	T2D/T3D/T4D/T3N	290*255*235/6pcs	7.5/6pcs	9180	19224
MD-04LED60-18	60W	18	T2D/T3D/T4D/T3N	290*255*235/6pcs	7.5/6pcs	9180	19224

MD-06

材料: 铝压铸灯体, PP镀铬塑料反射罩
表面处理: 防紫外线静电喷涂

Material: Die-casting aluminum body,
PP reflector by chrome.
Finishing: Surface anti-ageing
electrostatic spray processing, super
resistance to corrosion.

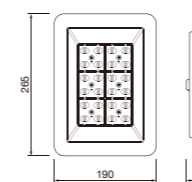


Code	Power	LED Qty	Optics	Packing Size	Weight	Pcs/20"	Pcs/40"
LED chips - 3535/5050							
MD-06LED30-12	30W	16	T1/T2A/T3A/T4A	550*400*200/8pcs	10.0/8pcs	5016	10296
MD-06LED40-24	40W	24	T1/T2A/T3A/T4A	550*400*200/8pcs	10.0/8pcs	5016	10296
MD-06LED60-24	60W	24	T1/T2A/T3A/T4A	550*400*200/8pcs	10.0/8pcs	5016	10296
MD-06LED75-36	75W	36	T1D/T2D/T3D/T4D	550*400*200/8pcs	10.0/8pcs	5016	10296
LED chips - 3030							
MD-06LED40-56	40W	56	T1B/T2B/T3B/T4B	550*400*200/8pcs	10.0/8pcs	5016	10296
MD-06LED60-84	60W	84	T1B/T2B/T3B/T4B	550*400*200/8pcs	10.0/8pcs	5016	10296

MD-06A

材料: 铝压铸灯体, PP镀铬塑料反射罩
表面处理: 防紫外线静电喷涂

Material: Die-casting aluminum body,
PP reflector by chrome.
Finishing: Surface anti-ageing
electrostatic spray processing, super
resistance to corrosion.

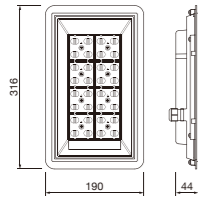


Code	Power	LED Qty	Optics	Packing Size	Weight	Pcs/20"	Pcs/40"
LED chips - 3535/5050							
MD-06ALED30-12	30W	12	T1/T2A/T3A/T4A	570*420*200/8pcs	12.2/8pcs	4752	9856
MD-06ALED40-24	40W	24	T1/T2A/T3A/T4A	570*420*200/8pcs	12.2/8pcs	4752	9856
MD-06ALED60-24	60W	24	T1/T2A/T3A/T4A	570*420*200/8pcs	12.2/8pcs	4752	9856
MD-06ALED75-36	75W	36	T1D/T2D/T3D/T4D	570*420*200/8pcs	12.2/8pcs	4752	9856
LED chips - 3030							
MD-06ALED40-56	40W	56	T1B/T2B/T3B/T4B	570*420*200/8pcs	12.2/8pcs	4752	9856
MD-06ALED60-84	60W	84	T1B/T2B/T3B/T4B	570*420*200/8pcs	12.2/8pcs	4752	9856

MD-06L

材料: 铝压铸灯体, 白色PC塑料反射罩
表面处理: 防紫外线静电喷涂

Material: Die-casting aluminum body, PC white plastic reflector.
Finishing: Surface anti-ageing electrostatic spray processing, super resistance to corrosion.

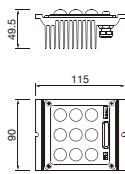


Code	Power	LED Qty	Optics	Packing Size	Weight	Pcs/20"	Pcs/40"
LED chips - 3535/5050							
MD-06LLED60-32	A3 60W	32	T1/T2/T3A/T4A	420*345*260/6pcs	12.0/6pcs	4128	8640
MD-06LLED75-32	A3 75W	32	T1/T2/T3A/T4A	420*345*260/6pcs	12.0/6pcs	4128	8640
MD-06LLED100-32	A3 100W	32	T1/T2/T3A/T4A	420*345*260/6pcs	12.0/6pcs	4128	8640
MD-06LLED120-48	D3 120W	48	T1D/T2D/T3D/T4D	420*345*260/6pcs	12.0/6pcs	4128	8640

MD-07

材料: 铝挤压氧化散热块
表面处理: 表面氧化处理

Material: Extruded aluminum heatsink.
Finishing: Surface by oxy. finishing.

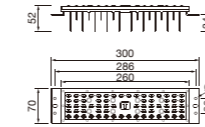


Code	Power	LED Qty	Optics	Packing Size	Weight	Pcs/20"	Pcs/40"
LED chips - 3535/5050							
MD-07LED20-9	20W	9	T19	370*370*210/36pcs	15.5/36pcs	32400	69120
LED chips - 3030							
MD-07LED10-9	10W	9	T19	370*370*210/36pcs	15.5/36pcs	32400	69120

MD-08

材料: 铝挤压氧化散热块
表面处理: 表面氧化处理

Material: Extruded aluminum heatsink.
Finishing: Surface by oxy. finishing.



Code	Power	LED Qty	Optics	Packing Size	Weight	Pcs/20"	Pcs/40"
LED chips - 5050							
MD-08DLED60-28	60W	28	TM1/TM2/TM3/TM4	345*245*200/12pcs	6.5/12pcs	20196	41448
LED chips - 3030							
MD-08BLED60-66	60W	66	TM2B	345*245*200/12pcs	6.5/12pcs	20196	41448

